

# WaGate® Gate Valve - SVM-TG DN/OD 110-315

WaGate® Gate Valve are designed for sewer and stormwater, process water and for the fishing and agricultural industry. SVM-TG is for one-sided pressure.



TECHNICAL GUIDE: **01.21**

## Applications

Stormwater discharge

Waste and surface water

Pump station overflows

Wetlands

## Product Attributes

Provides flood and odour protection

Very low head loss

Quick installation into new and existing drains or chambers

Low maintenance and low operation costs

Protects the environment by controlling water flows and preventing the spread of pollutants

WaGate® Gate Valve are designed for sewer and stormwater, process water and for the fishing and agricultural industry. SVM-TG is for one-sided pressure.

### Advantages

- Can be connected to the pipeline network with coupling, electric coupling, flanges, or welded together in open terrain
- Full bore and with self-cleansing pocket to ensure total closure of the valve blade
- Long lifespan. Low operating and maintenance cost
- The O-ring seal against the valve blade can be replaced in larger valves
- Can be built into the pipeline inside and outside well systems with spindle extensions and protective tubes in PEH
- The valve is suitable for installation in the ground without any form of protection

### Operation

- SVM-TG has a non-rising spindle and is operated with a handwheel or with an adapter and extension rod.
- Can be used with electric, pneumatic, or hydraulic actuators

### Special Design

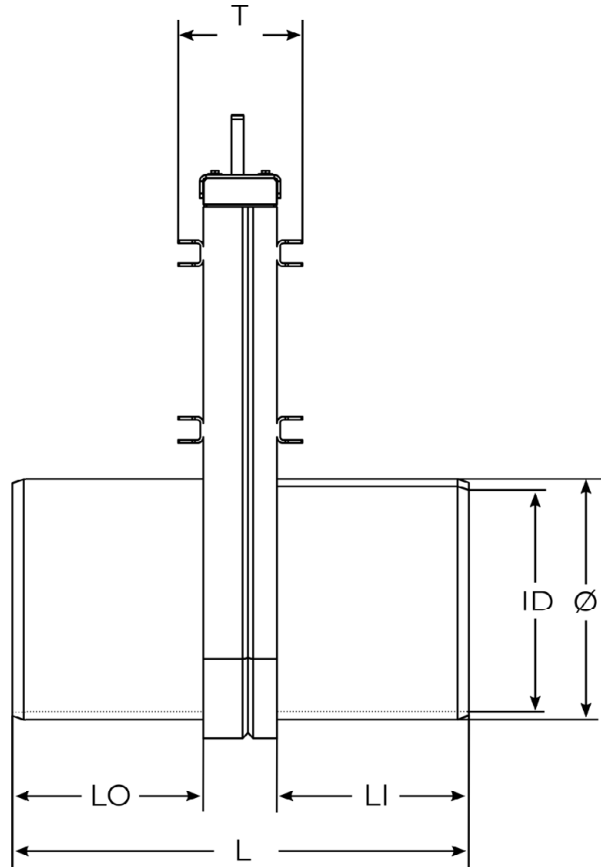
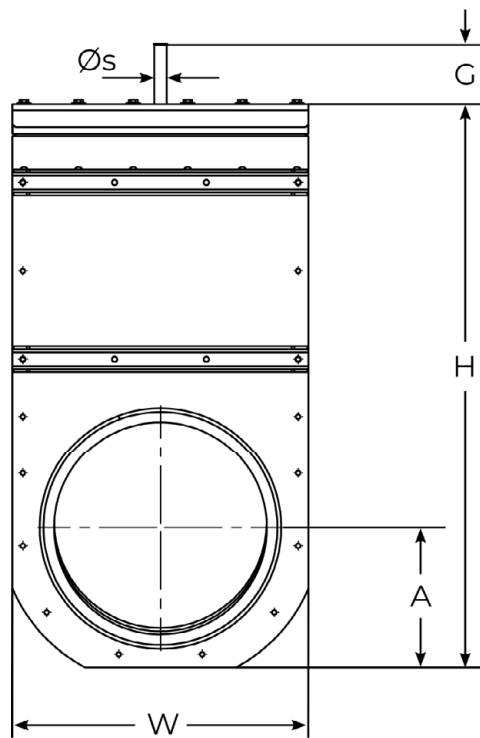
- With DIN flange or for mounting on a wall and in a chamber

**TABLE 1** Material

Valve body	PEHD 500
Reinforcement profiles	EN 1.4404, (EN 1.4462)
Valve blade	EN 1.4404, (EN 1.4462)
Spindle	EN 1.4571 (EN 1.4462)
Spindle nut	Tin bronze (Cu2Sn12)
Valve gasket	EPDM (NBR)
Top gasket	EPDM
Bearing	Nylon
Tätningring	NBR

**TABLE 2** Technical Data

Maximum pressure	DN/OD 110-200 – 6 bar
	DN/OD 250-315 – 4 bar
	DN/OD 400-630 – 2 bar
Temperature	-50° C - +80° C



**TABLE 3** Dimensions (mm)

DN	Ø	ID	W	H	A	G	ØS	L	LO	LI	T	Weight (kg)	NM	TURNS TO OPEN	BAR	Pipe
100	110	96.8	206	382	98	107	16	376	178	198	162	10	6	31	6	SDR17
125	125	110.2	220	414	110	107	16	376	178	198	162	11	7,5	34	6	SDR17
160	160	141	250	480	122	107	16	396	188	208	162	14	12,0	42	6	SDR17
200	200	176.2	285	539	138	107	16	396	188	208	162	19	19,0	51	6	SDR17
250	250	220.4	330	636	158	107	16	596	288	308	162	26	29,0	63	4	SDR17
315	315	277.6	386	735	182	107	16	596	288	308	162	37	46,0	76	4	SDR17
400	400	369.4	486	925	228	107	18	796	388	408	164	56	27,0	99	2	SDR26
450	450	415.6	545	1030	259	107	18	796	388	408	164	67	35,0	113	2	SDR26
500	500	461.8	595	1087	273	107	18	796	393	403	218	89	43,0	125	2	SDR26
560	560	517.2	630	1256	330	180	25	996	493	503	228	146	75,0	112	2	SDR26
630	630	581.8	719	1350	342	200	25	1006	498	508	228	148	95,5	123	2	SDR26

*Other dimensions on request. Reserves the right to changes*



Scan for more  
information

**Disclaimer:** While every effort has been made to ensure that the information in this document is correct and accurate, users of Hygrade Water Infrastructure product or information within this document must make their own assessment of suitability for their particular application. Product dimensions are nominal only, and should be verified if critical to a particular installation. No warranty is either expressed, implied, or statutory made by Hygrade Water Infrastructure unless expressly stated in any sale and purchase agreement entered into between Hygrade Water Infrastructure and the user.

**November 2024**

**1300 855 092**  
**hygradewater.com.au**

**BRISBANE** (Head Office) 42-44 Blue Eagle Drive, Meadowbrook, QLD 4131  
**SYDNEY** 2/35 Prime Dr, Seven Hills NSW 2147, Australia  
**MELBOURNE** 20A Frances Drive, Dandenong South 3175

**HW** **HYGRADE WATER**  
INFRASTRUCTURE