

Hawle Synoflex End Cap

Optional with or without internal thread 1" - 2" axial or radial.



TECHNICAL GUIDE: **APF2.4**

Applications

Pump stations
Treatment plants
Pipelines
Pipe repairs

Product Attributes

Fits most common pipe materials
Restraint End Cap
Wide fitting range
Reversible bolts
Flexible Restraint System
No liners required

Approvals/Standards

Kiwa BRL-K 775/03
EN 14525
Flanges to AS4087 B5
AS4020

Quality

ISO 9001 Quality Management
WSAA

An easy to install quality range of restraint end cap from Hawle. High tolerance range to accept DCI, PE/PVC and AC.

Product Attributes

- Optional with or without internal thread 1" - 2" axial or radial.



FIG. 1

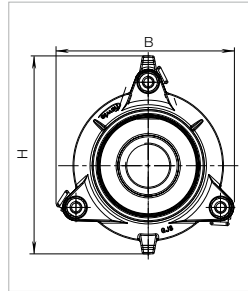


FIG. 2

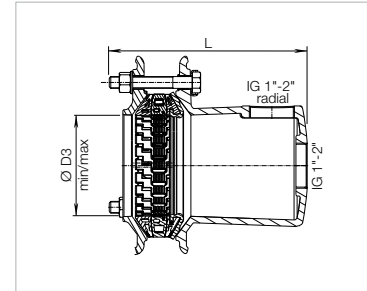


FIG. 3

TABLE 1 Synoflex end cap

DN	MOP (PN)	Socket				L	Weight kg
		B	H	Pipe \varnothing D3 min / max	Bolts		
50	16	141	170	56 – 71	3xM12 – 80	207	3.9
65		156	186	71 – 88	3xM12 – 80	223	5.2
80		171	204	85 – 105	3xM12 – 80	227	5.7
100		226	260	104 – 132	3xM16 – 100	256	8.8
125		250	290	131 – 160	3xM16 – 110	274	12.7
150		315	350	155 – 192	4xM16 – 110	279	15.2
200		326	371	198 – 230	6xM16 – 120	304	22.0
225		360	410	230 – 260	6xM20 – 130	321	31.3
250		407	464	265 – 310	6xM20 – 130	329	39.0
300		510	510	313 – 356	8xM20 – 130	339	50.3
350	10	550	550	352 – 396	12xM20 – 130	367	61.0
400		596	596	398 – 442	12xM20 – 130	502	85.0



Scan for more information

Disclaimer: While every effort has been made to ensure that the information in this document is correct and accurate, users of Hygrade Water Infrastructure product or information within this document must make their own assessment of suitability for their particular application. Product dimensions are nominal only, and should be verified if critical to a particular installation. No warranty is either expressed, implied, or statutory made by Hygrade Water Infrastructure unless expressly stated in any sale and purchase agreement entered into between Hygrade Water Infrastructure and the user.

March 2024